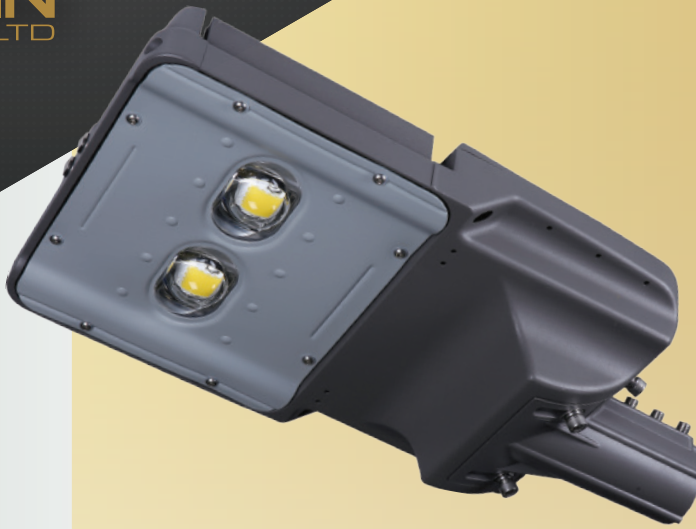




**CONSSIN**  
LIGHTING.CO.LTD

# PUBLIC AREA LED STREET LIGHT

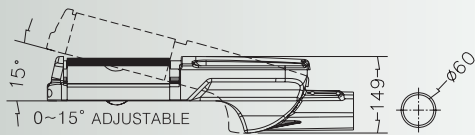
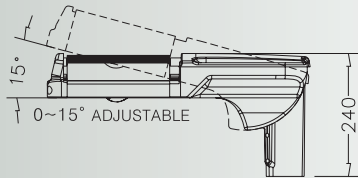
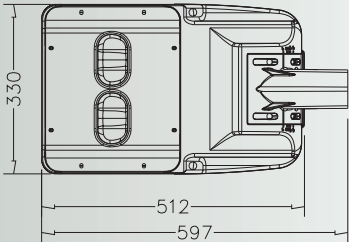


- 50000h**  
Lifetime Range
- 40°C ~ +50°C**  
Working Temperature
- 100-240AC 24/48DC**  
Voltage Range
- 3000K, 4000K, 5000K**  
Color Temperature

## MPG2



- ✦ INCORPORATED LATEST GENERATION OF 105-115 LM/W CITIZEN CHIP.
- ✦ LOW ABSORPTION (LESS THAN 5%) WITH A DIVERGENT-ASYMMETRIC GEOMETRY, GENERATING AN EXTENT AND UNIFORMITY LIGHT BEAM.
- ✦ THE NEW LENS IS MADE FORM HIGH PURITY GLASS ( 96%)
- ✦ HIGH UV RESISTANCE AND LOW MAINTENANCE COSTS.
- ✦ MADE FROM HIGH QUALITY ALUMINIUM



### DESIGNED FOR USE IN:

- ✦ STREET LIGHTS
- ✦ CAR PARKS
- ✦ TUNNELS
- ✦ GENERAL OUTDOOR AREA

02



MODEL	V	T (kelvin)	LENS	W	LUMEN	MATERIAL	LIGHT Source	Ra	T(H)	Hz	EFFIC	IP	TEMPERATURE (Working)	DIMENSION	WEIGHT
MPG2-160	AC240V	5000K	A	160W	16800-18400	ALUMINIUM ALLOY	CITIZEN	>70	50000	50/60	92%	IP67	-40°C + 50°C	597mm 330mm 149mm	8.2kg
MPG2-200	AC240V	5000K	D F	200W	21000-23000	ALUMINIUM ALLOY	CITIZEN	>70	50000	50/60	92%	IP67	-40°C + 50°C	597mm 330mm 149mm	8.2kg



**MORE PRODUCT RANGE ON OUR WEBSITE.**